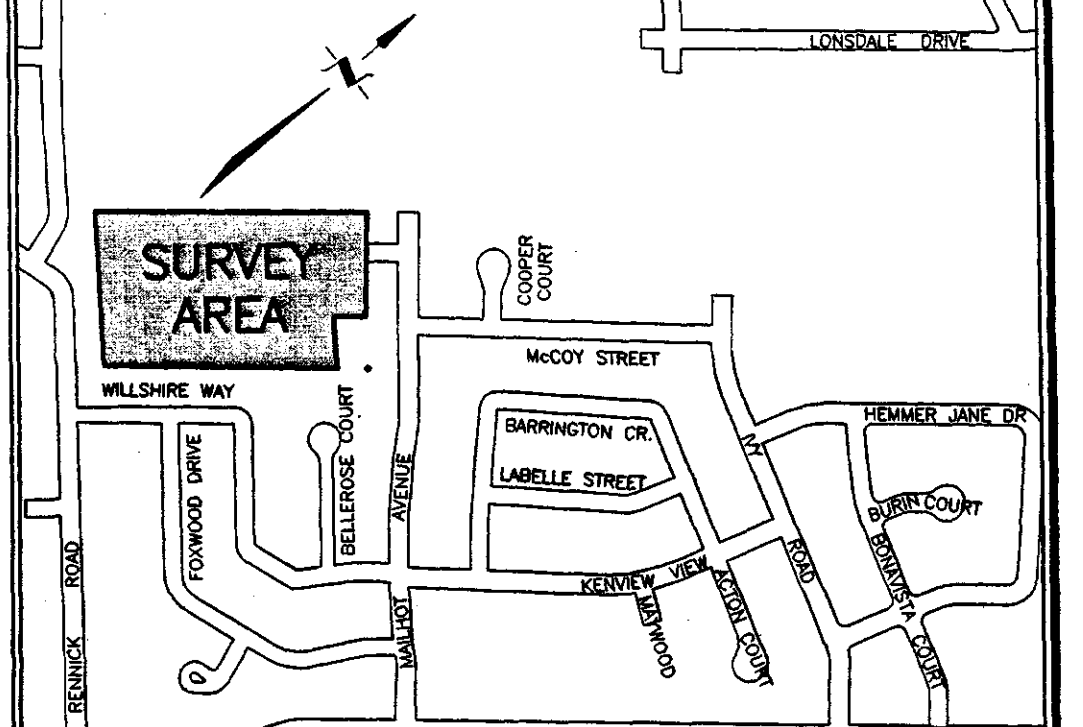
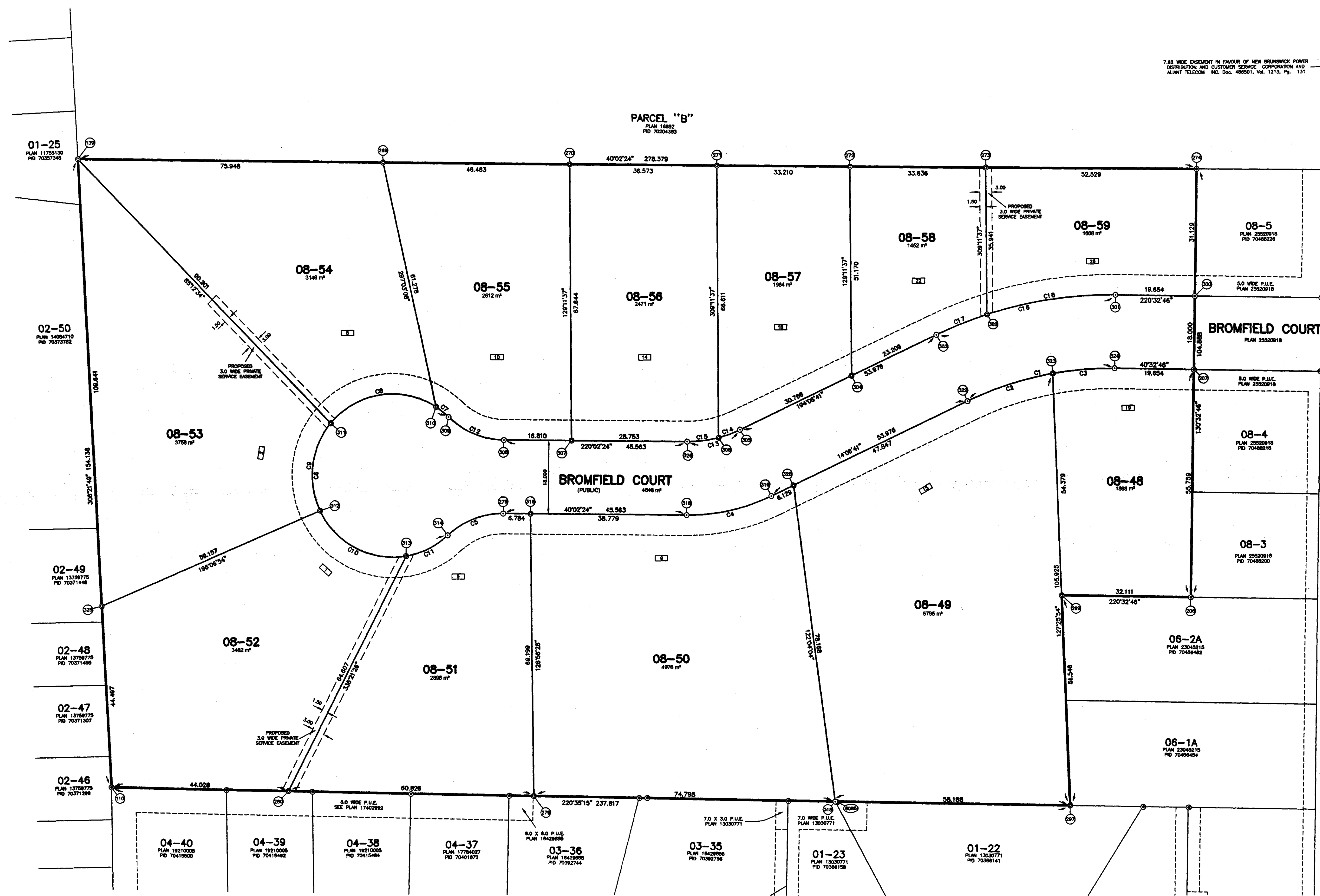


20307448



LEGEND table with symbols for various survey markers, monuments, and utility lines.

ALL COMPUTATIONS PERFORMED AND COORDINATES SHOWN ON THIS PLAN ARE BASED ON THE NEW BRUNSWICK STEREOGRAPHIC DOUBLE PROJECTION AND THE MONK(CRS) ELLIPSOID AS REALIZED BY SERVICE NEW BRUNSWICK'S PRIMARY HPN COORDINATE MONUMENT SYSTEM.

Table with columns for Station, Easting, Northing, Curve, Radius, Arc, and Chord. Includes N.B. GRID COORDINATE VALUES.

CURVE DATA table with columns for Curve, Station, Radius, Arc, and Chord.

UTILITIES APPROVAL text block with signature and date.

CITY ENGINEER'S APPROVAL text block with signature and date.

DOCUMENT text block with PID and CRO date.

OWNER'S STATEMENT text block with signature and date.

PURPOSE OF PLAN text block describing the creation of lots and easements.

NOTE text block regarding survey directions and certification.

GMPDC VARIANCE GRANTED / DEROGATION ACCORDÉE CDAGM

DATE August 22, 2007

APPROUVE / APPROVED text block with signature and date.

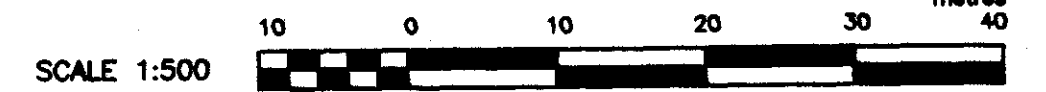
Money In Lieu of Lands for Public Purposes PAID text block with date and amount.

City of Moncton / Ville de Moncton text block with official stamp.

Plan Received and Filed / plan reçu et déposé text block with date and time.

SUBDIVISION PLAN UNIT 2 CARSONCORP INC. SUBDIVISION

SITUATED ON THE WEST SIDE OF MAILHOT AVENUE, CITY OF MONCTON, PARISH OF MONCTON, COUNTY OF WESTMORLAND, PROVINCE OF NEW BRUNSWICK



terrain logo and SURVEYOR'S STATEMENT text block with signature and date.